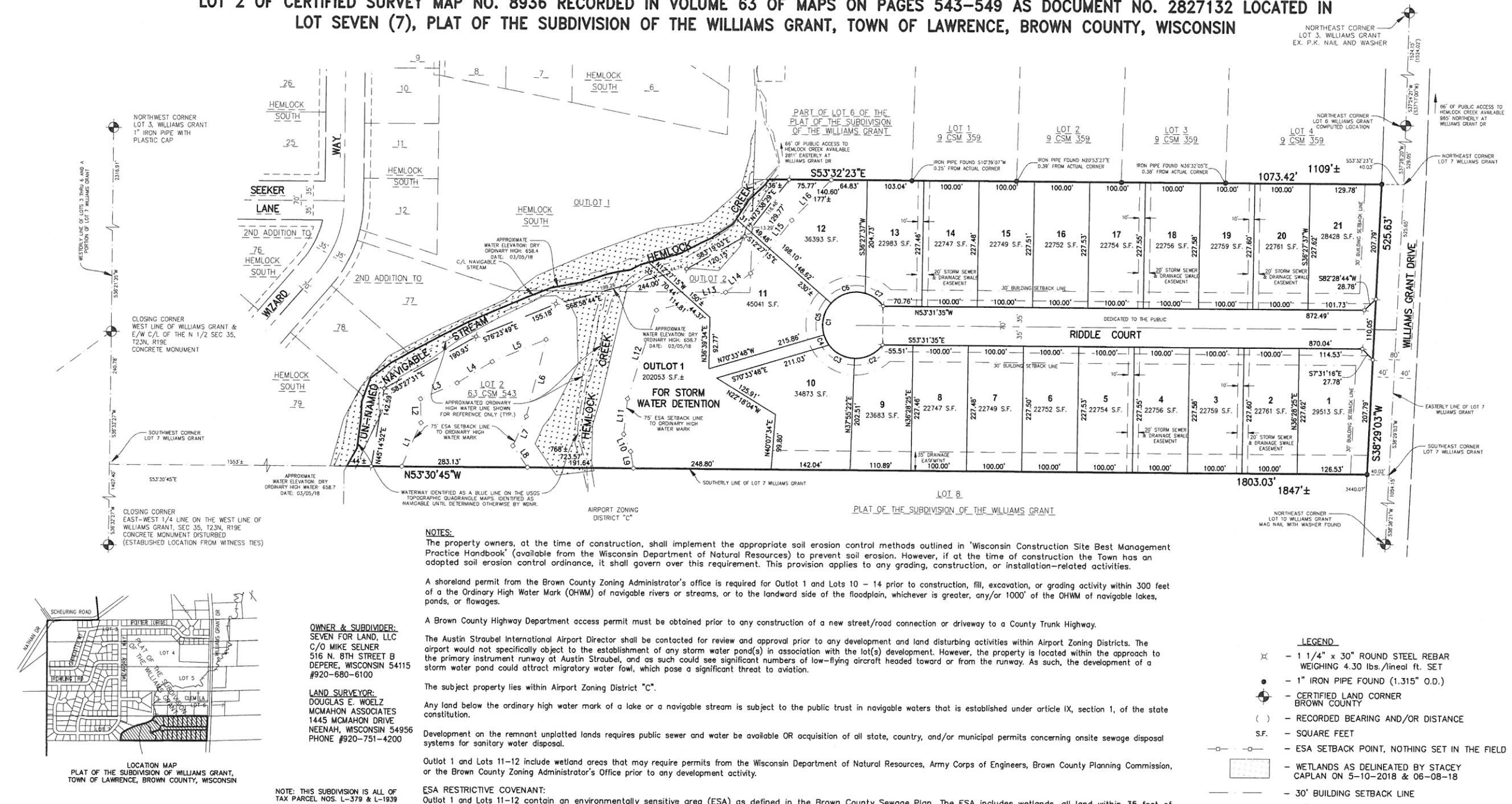


HEMLOCK EAST

ALL OF OUTLOT 2 OF HEMLOCK SOUTH RECORDED IN VOLUME 24 OF PLATS ON PAGES 79 & 80 AS DOCUMENT NO. 2835530 AND PART OF LOT 2 OF CERTIFIED SURVEY MAP NO. 8936 RECORDED IN VOLUME 63 OF MAPS ON PAGES 543-549 AS DOCUMENT NO. 2827132 LOCATED IN LOT SEVEN (7), PLAT OF THE SUBDIVISION OF THE WILLIAMS GRANT, TOWN OF LAWRENCE, BROWN COUNTY, WISCONSIN



ESA Setback Line Table		
Line #	Direction	Length
L1	N59°41'56"E	86.46'
L2	N34°33'56"E	43.24'
L3	S77°26'13"E	72.24'
L4	S85°18'10"E	74.14'
L5	S76°29'11"E	104.70'
L6	S50°00'06"W	143.93'
L7	S60°20'20"W	58.22'
L8	S01°37'43"W	47.17'

ESA Setback Line Table		
Line #	Direction	Length
L9	N26°01'26"E	31.02'
L10	N13°57'19"E	33.89'
L11	N41°56'25"E	64.25'
L12	N53°36'03"E	167.99'
L13	S68°35'19"E	129.47'
L14	N88°28'34"E	56.56'
L15	N73°28'45"E	120.67'
L16	N79°57'52"E	101.46'

Curve Table							
Curve #	Radius	Delta	Length	Chord Direction	Chord Length	TANGENT	BEARING
C1	60.00'	288°37'46"	302.25'	S36°28'25"W	70.00'	S72°09'32"W	S00°47'18"W
C2	60.00'	55°45'49"	58.40'	S79°57'33"E	56.12'		
C3	60.00'	52°02'34"	54.50'	S26°03'21"E	52.64'		
C4	60.00'	19°28'16"	20.39'	S09°42'04"W	20.29'		
C5	60.00'	58°06'33"	60.85'	S48°29'29"W	58.28'		
C6	60.00'	64°49'43"	67.88'	N70°02'24"W	64.32'		
C7	60.00'	38°24'51"	40.23'	N18°25'07"W	39.48'		

There are no objections to this plat with respect to Secs. 236.15, 236.16, 236.20 and 236.21(1) and (2). Wis. Stats. as provided by s. 236.12, Wis. Stats.

Certified _____, 20____

Department of Administration



BEARINGS ARE REFERENCED TO THE WESTERLY LINE OF LOTS 3 THRU 6 AND A PORTION OF LOT 7, PLAT OF THE SUBDIVISION OF THE WILLIAMS GRANT, TOWN OF LAWRENCE, BROWN COUNTY, WISCONSIN, WHICH BEARS S36°21'35"W PER THE WISCONSIN COUNTY COORDINATE SYSTEM AS PUBLISHED FOR BROWN COUNTY.

SCALE - FEET
SCALE 1" = 100'

Hemlock East Subdivision - Pricing 10/18/21

[illegible]

A/O- Accepted Offer